

Beginning with HABITAT
 An Approach to Conserving Maine's Natural Space for Plants, Animals, and People
 www.beginningwithhabitat.org

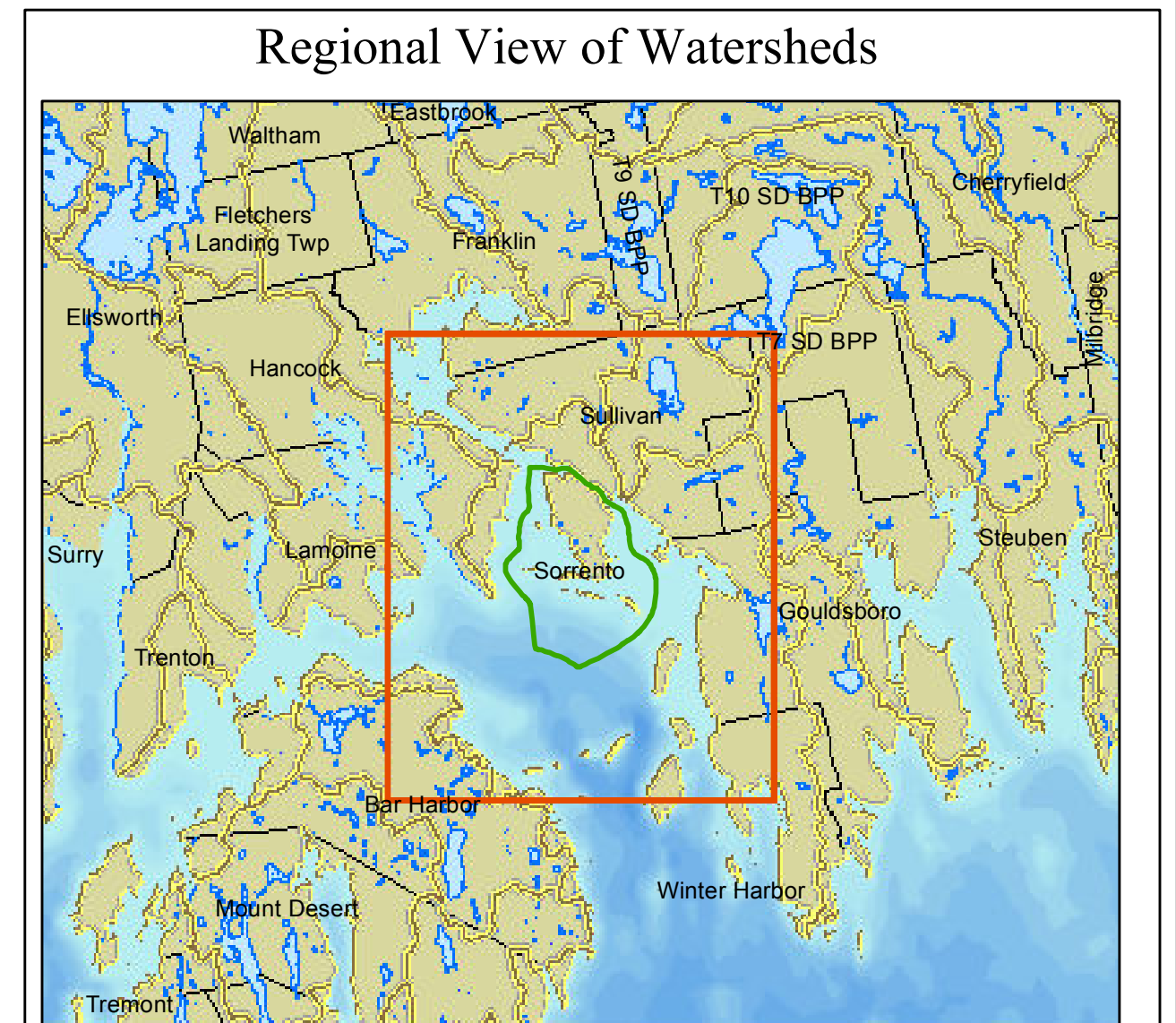
Primary Map 1
Water Resources & Riparian Habitats
Sorrento

This map is nonregulatory and is intended for planning purposes only

LEGEND

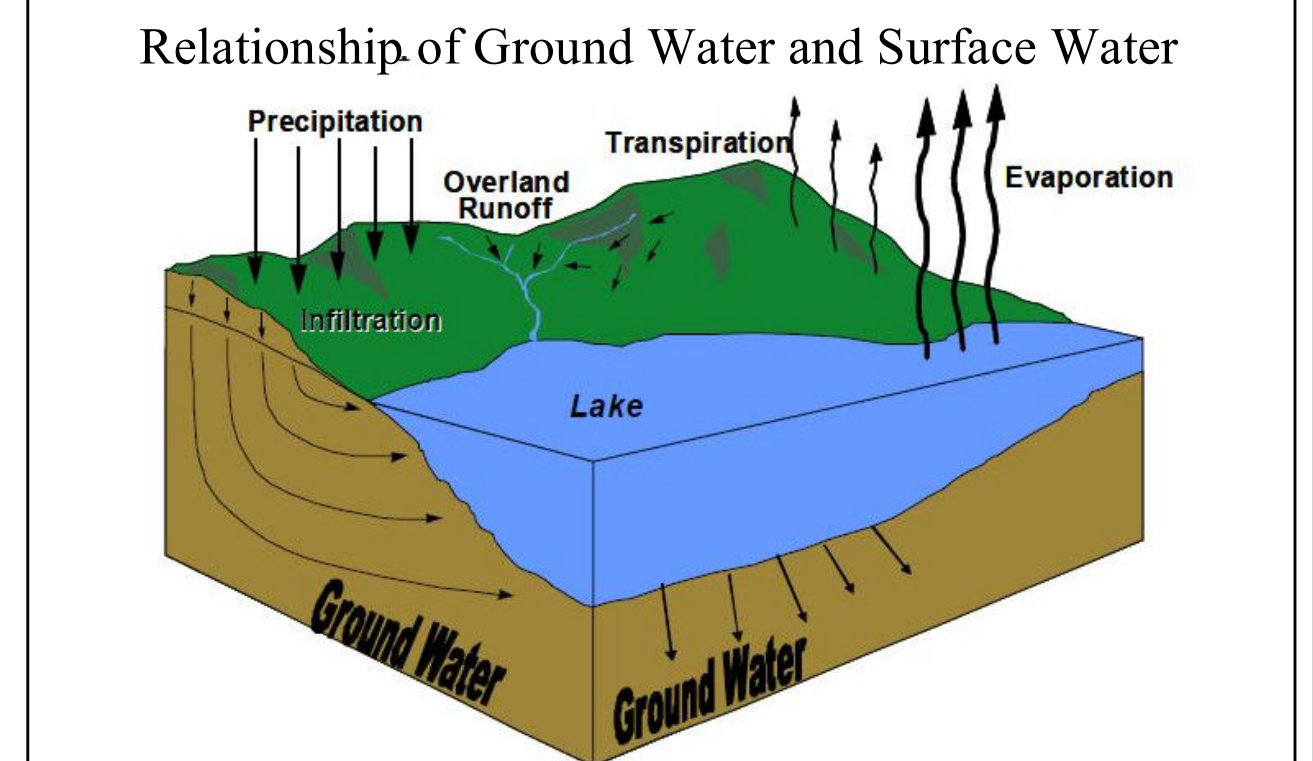
This map depicts riparian areas associated with major surface water features and important public water resources. This map does not depict all streams or wetlands known to occur on the landscape and should not be used as a substitute for on the ground surveys. This map should be used as a planning reference only and is intended to illustrate the natural hydrologic connections between surface water features. Protecting riparian habitats protects water quality, maintains habitat connections, and safeguards important economic resources including recreational and commercial fisheries.

- Selected Town or Area** (Green outline)
- Organized Township Boundary** (Dashed black line)
- Unorganized Township** (Dotted black line)
- Developed** - Impervious surfaces including buildings and roads (Black lines with hatching)
- Drainage divides** - These are the smallest hydrologic units mapped in Maine. They contain watershed boundaries for most ponds and rivers in Maine. (Yellow lines)
- NWI Wetlands** - National Wetlands Inventory (NWI) uses aerial photographs to approximate wetland locations. NWI data is not a comprehensive mapping of wetland resources and typically under represents the presence of wetlands on the landscape. The presence of wetlands needs to be determined in the field prior to conducting activities that could result in wetland disturbance. (Blue areas)
- Riparian Habitat** - depicted using common regulatory zones including a 250-foot-wide strip around Great Ponds (ponds >10 acres), river, coastline, and wetlands >10 acres and a 75-foot-wide strip around streams. Riparian areas depicted on this map may already be affected by existing land uses. (Pink areas)
- Shellfish Growing Areas** - The Maine Department of Marine Resources maps growing areas for economically important shellfish resources. This map depicts softshell and hard clam resources in order to illustrate the relation of these resources to streams and shoreline areas vital to their conservation. (Blue hatched areas)
- Wild Brook Trout Priority Area** - These habitat areas are priority conservation areas for wild brook trout and include a recommended 100 ft (on either side) no-disturbance buffer around the waterbodies. These areas may also be candidates for instream habitat restoration actions and/or stream connectivity enhancement. (Red hatched areas)
- Public Water Supply Wells** (Blue circles)
- Source protection area** - Buffers that represent source water protection areas for wells and surface water intakes that serve the public water supply. Their size is proportional to population served and/or by the type of water supply system. These buffers range from 300 to 2,500 feet in radius. (Blue circles with hatching)
- Aquifers** - flow of at least 10 gallons per minute (Blue circles with dots)



- Main Map Extent** (Red outline)
- Selected Town or Area** (Green outline)
- Subwatersheds** (Yellow outline)

1 inch = 5 miles



Precipitation is the source of all water. Surface water and ground water are related. Drinking water can come from either source. Ground contaminants can affect both. The relationship between ground water and surface water is part of the hydrologic cycle. Precipitation that falls from the atmosphere as rain or snow reaches the land surface and recharges rivers, lakes, wetlands, and other surface bodies of water directly through overland runoff. Surface water also seeps into the ground through infiltration and eventually reaches the ground water, or through evaporation, returns to the atmosphere. Water evaporates from leaves and stems of plants through transpiration.

Shoreland Zoning

Maine's Mandatory Shoreland Zoning Act is intended to protect water quality, conserve wildlife habitat, and preserve the natural beauty of Maine's shoreline areas. Successful implementation requires local awareness of and appreciation for surface water resources and effective enforcement of setback and buffer requirements.

At a minimum, Maine's shoreland zones include all land within:

- 250 feet of the high-water line of any pond over 10 acres, any river that drains at least 25 square miles, and all tidal waters and saltwater marshes;
- 250 feet of a freshwater wetland over 10 acres (except "forested" wetlands); and
- 75 feet of a stream that is either an outlet stream of a great pond, or located below the confluence of two perennial streams as depicted on a USGS topographic map.

Shoreland zoning encourages towns to provide greater protection to their local water resources by applying shoreland zone protections to additional resource types such as smaller streams and wetlands, and rare terrestrial features. For specific guidance regarding Maine's Mandatory Shoreland Zoning Act contact the Dept. of Environmental Protection Shoreland Zoning Unit. 207-287-3901 (Augusta), 207-822-6300 (Portland), 207-941-4116 (Bangor). www.maine.gov/dep/blwq/docstand/szpage.htm

Data Sources

DATA SOURCE INFORMATION	SHELLFISH
TOWNSHIP BOUNDARIES Maine Office of GIS (2020); metwp24	Maine Department of Marine Resources; softshell_clams, hard_clams
ROADS Maine Office of GIS, Maine Department of Transportation (2021); metdotwp	RIPARIAN BUFFERS Maine Office of GIS, Maine Natural Areas Program (2011)
HYDROLOGY USGS National Hydrography Dataset (NHD) (Maine (2015))	WELLS, WELL BUFFERS Maine Office of GIS, Maine Department of Human Services-Drinking Water Program (2011); wells_wellbuf
DEVELOPED Maine Office of GIS, Maine Department of Inland Fisheries and Wildlife (2020); impervious_change_2016	AQUIFERS Maine Office of GIS, Maine Geological Survey (2011); aquifer_polygons
NATIONAL WETLANDS INVENTORY U.S. Fish & Wildlife Service (2020); NWI	DRAINAGE DIVIDES Maine Office of GIS (1994); metdvd
	BROOK TROUT HABITAT Maine Department of Inland Fisheries & Wildlife (2020)

DATA SOURCE CONTACT INFORMATION

Maine Office of GIS: <http://www.maine.gov/ogis/>
 Maine Natural Areas Program: <http://www.maine.gov/ocd/nrap/index.html>
 Maine Department of Marine Resources: <http://www.maine.gov/dmr/>
 Maine Department of Transportation: <http://www.maine.gov/dot/>
 Maine Geological Survey: <http://www.maine.gov/ocd/mgs/mgs.htm>
 Maine Department of Inland Fisheries & Wildlife: <http://www.maine.gov/ifw/wildlife/index.html>

DIGITAL DATA REQUEST
 To request digital data for a town or organization, please visit our website: http://www.beginningwithhabitat.org/nc_mapgis_data_request.html